

REVISIONS		
REV. NO.	DESCRIPTION	DATE

PIER NO. 1 BAR LIST - PHASE I					
MARK	SIZE	NO.	FORM	LENGTH	VARIATION
BH1	#10	12	BNT	37'-1"	
BH2	#10	12	STR	35'-8"	
BH3	#6	12	STR.	35'-8"	
BH4	#5	6	BNT	8'-5"	
BH8	#5	25	BNT	7'-0"	
C1	#10	142	BNT	13'-5"	
F1	#8	120	STR	7'-6"	
F2	#4	54	BNT	16'-11"	
P1	#4	24	BNT	7'-10"	
P2	#4	20	BNT	7'-11"	
P3	#4	2	BNT	18'-5"	
S1	#5	52	BNT	15'-7"	
S2	#4	14	BNT	18'-1"	
S3	#4	28	BNT	17'-3"	
S4	#4	4	BNT	9'-5"	
SC1	#4	10	BNT	10'-3"	
SC2	#4	12	BNT	5'-7"	

DRILLED SHAFTS

NON-EPOXY COATED

① ②	D1	#11	66	BNT	49'-3"	
②	DS1	W20	3	SPIRAL	1157'-0"	

PIER NO. 1 BAR LIST - PHASE II						
MARK	SIZE	NO.	FORM	LENGTH	VARIATION	
BH4	#5	6	BNT	8'-5"		
③	BH5	#10	12	BNT	36'-3"	
③	BH6	#10	12	STR	34'-8"	
③	BH7	#6	12	STR.	34'-8"	
BH8	#5	15	BNT	7'-0"		
C1	#10	88	BNT	13'-5"		
F1	#8	80	STR	7'-6"		
F2	#4	36	BNT	16'-11"		
P1	#4	24	BNT	7'-10"		
P2	#4	20	BNT	7'-11"		
P3	#4	2	BNT	18'-5"		
S1	#5	52	BNT	15'-7"		
S2	#4	14	BNT	18'-1"		
S3	#4	14	BNT	17'-3"		
S4	#4	4	BNT	9'-5"		
SC1	#4	10	BNT	10'-3"		
SC2	#4	12	BNT	5'-7"		

DRILLED SHAFTS

NON-EPOXY COATED

① ②	D1	#11	44	BNT	49'-3"	
②	DS1	W20	2	SPIRAL	1157'-0"	

PIER NO. 2 BAR LIST - PHASE I					
MARK	SIZE	NO.	FORM	LENGTH	VARIATION
BH1	#10	12	BNT	37'-1"	
BH2	#10	12	STR	35'-8"	
BH3	#6	12	STR.	35'-8"	
BH4	#5	6	BNT	8'-5"	
BH8	#5	25	BNT	7'-0"	
C1	#10	142	BNT	15'-11"	
F1	#8	120	STR	7'-6"	
F2	#4	54	BNT	16'-11"	
P1	#4	24	BNT	7'-10"	
P2	#4	20	BNT	7'-11"	
P3	#4	2	BNT	18'-5"	
S1	#5	52	BNT	15'-7"	
S2	#4	36	BNT	18'-1"	
S3	#4	72	BNT	17'-3"	
S4	#4	4	BNT	9'-5"	
SC1	#4	10	BNT	10'-3"	
SC2	#4	12	BNT	5'-7"	

DRILLED SHAFTS

NON-EPOXY COATED

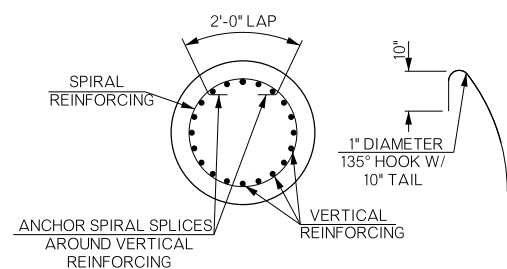
① ②	D1	#11	66	BNT	47'-3"	
②	DS1	W20	3	SPIRAL	1106'-8"	

PIER NO. 2 BAR LIST - PHASE II						
MARK	SIZE	NO.	FORM	LENGTH	VARIATION	
BH4	#5	6	BNT	8'-5"		
③	BH5	#10	12	BNT	36'-3"	
③	BH6	#10	12	STR	34'-8"	
③	BH7	#6	12	STR.	34'-8"	
BH8	#5	15	BNT	7'-0"		
C1	#10	88	BNT	15'-11"		
F1	#8	80	STR	7'-6"		
F2	#4	36	BNT	16'-11"		
P1	#4	24	BNT	7'-10"		
P2	#4	20	BNT	7'-11"		
P3	#4	2	BNT	18'-5"		
S1	#5	52	BNT	15'-7"		
S2	#4	36	BNT	18'-1"		
S3	#4	36	BNT	17'-3"		
S4	#4	4	BNT	9'-5"		
SC1	#4	10	BNT	10'-3"		
SC2	#4	12	BNT	5'-7"		

DRILLED SHAFTS

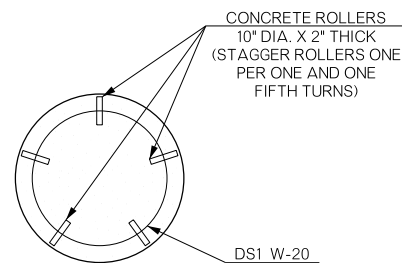
NON-EPOXY COATED

① ②	D1	#11	44	BNT	47'-3"	
②	DS1	W20	2	SPIRAL	1106'-8"	



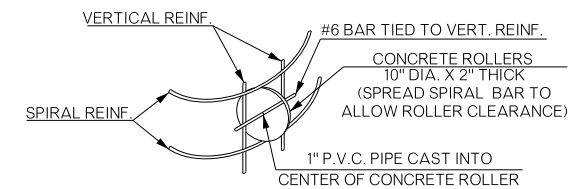
DETAIL OF SPIRAL REINFORCING SPLICE

NOTE: SPIRAL BARS SHALL CONFORM TO AASHTO A-32. SPIRAL BAR LENGTH DOES NOT INCLUDE LAP. IF LAP IS REQUIRED, THE LENGTH OF THE LAP SHALL BE AS SHOWN.



DETAIL OF ROLLER PLACEMENT

NOTE: CONCRETE USED IN THE CONCRETE ROLLERS SHALL HAVE A MINIMUM 28 DAY COMPRESSIVE STRENGTH OF 4000 PSI. ALTERNATIVES TO CONCRETE ROLLERS MAY BE PERMITTED IN ACCORDANCE WITH SUB SECTION 516.04.A OF THE SPECIAL PROVISIONS FOR DRILLED SHAFT FOUNDATIONS WITH APPROVAL OF THE ENGINEER.



DETAIL OF ROLLER INSTALLATION

- ① ANY PROJECTED LENGTH PAST TOP OF DRILLED SHAFT SHALL NOT BE CONSIDERED ADDITIONAL PAY LENGTH FOR DRILLED SHAFT.
- ② INCLUDED IN PRICE BID PER LINEAR FOOT OF DRILLED SHAFT
- ③ MECHANICALLY SPLICE TO PHASE I REINFORCING

BRIDGE "A" SH-33 OVER COTTONWOOD CREEK	LOGAN COUNTY	Design	GT	11/15
DETAILS OF PIERS NO. 1 & 2 (SHEET 4 OF 4)		Detail	TIS	2/16
		Check	TT	8/16
STATE OF OKLAHOMA		DEPARTMENT OF TRANSPORTATION		Sheet: PEARSON Engr: HERNANDEZ
JOB/PIECE NO. 21860(04)		SHEET NO. B033		